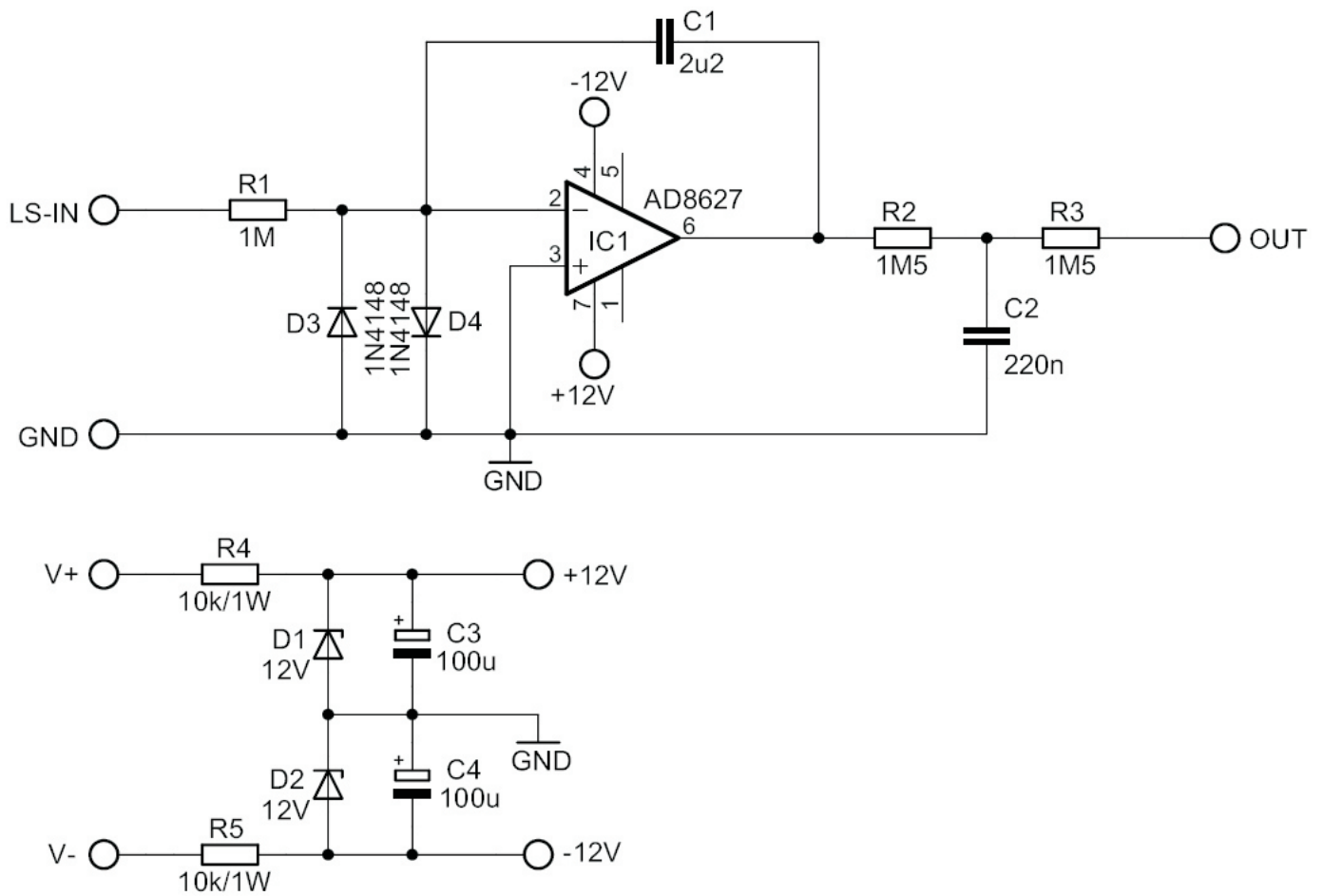


DC Offset Servo PCB, DIY version by Ray

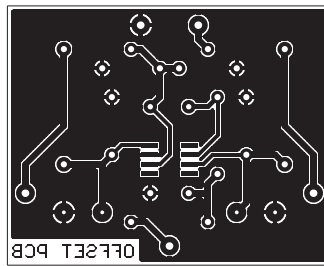
Schematic diagram



Not for commercial use! For DIY purposes only!

DC Offset Servo PCB, DIY version by Ray

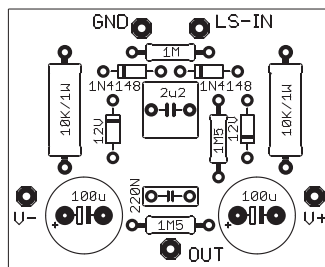
BOTTOM layer



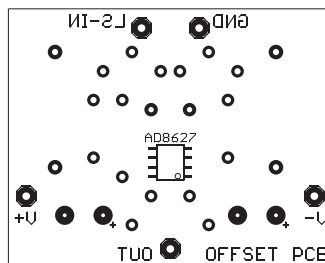
Not for commercial use! For DIY purposes only!

DC Offset Servo PCB, DIY version by Ray

SILKSCREEN and component placement



TOP layer



BOTTOM layer

Not for commercial use! For DIY purposes only!

DC Offset Servo PCB, DIY version by Ray

Partslist

Part no.	Value:	Type:
C1	2u2	5mm MKT
C2	220n	5mm MKT
C3	100u/63V	Æ10 x 5mm pitch
C4	100u/63V	Æ10 x 5mm pitch
D1	BZX85C12	1,3W, axial
D2	BZX85C12	1,3W, axial
D3	1N4148	axial
D4	1N4148	axial
R1	1M/1%	0,6W, 0207, axial
R2	1M5/1%	0,6W, 0207, axial
R3	1M5/1%	0,6W, 0207, axial
R4	10k/5%	1W, axial
R5	10k/5%	1W, axial
IC1	AD8627	SO-8

Not for commercial use! For DIY purposes only!